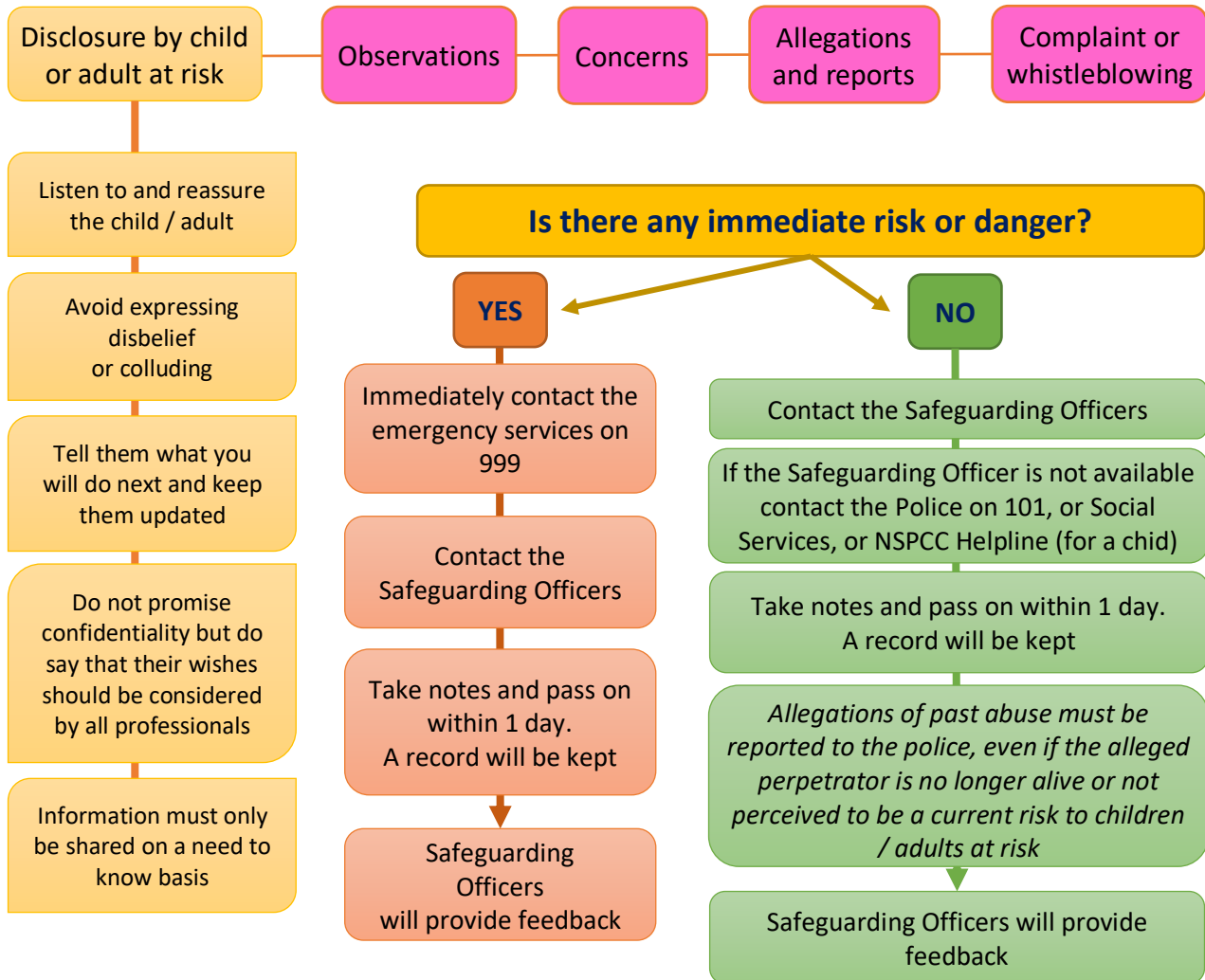


What to do if you are concerned about a child / vulnerable adult/adult at risk including:

- ❖ inappropriate behaviour against them
- ❖ possible harm caused to a child or adult at risk or
- ❖ possible crime committed against a child or adult at risk

In your Focolare role



Quick Contacts

Focolare Safeguarding Officers:

Jane Evans, Nic Innocent – safeguarding@focolare.org.uk

Social Services / Social Care – search for your Local Authority online or look for details of the Local Authority Designated Officer (LADO)

NSPCC Helpline: 0808 800 5000 help@nspcc.org.uk

Catholic Safeguarding Standard Agency (CSSA): 020 7901 1920
admin@catholicsafeguarding.org.uk